

**IMMEDIATE ACCESS TO THE FLORIDA TURNPIKE  
AND I-95 VIA NORTHLAKE BLVD OR W BLUE HERON BLVD.**



**TIMED DISTANCES:**

FLORIDA TURNPIKE - 4 Minutes  
INTERSTATE 95 - 4 Minutes  
AIRPORT - 16 Minutes



**MICHAEL  
FALK&CO.**  
Commercial Real Estate Services

[www.falkandco.com](http://www.falkandco.com)

**561.478.6400**

Michael Falk / [michael@falkandco.com](mailto:michael@falkandco.com) / 561.662.2624  
Scott Weprin / [scott@falkandco.com](mailto:scott@falkandco.com) / 561.239.9386

901 Northpoint Parkway, Suite 109 / West Palm Beach, FL 33407



**GARDENS** Innovation Center

**For Lease: 2,000 - 28,854 SF +/-**  
**Gardens Innovation Center**  
348/354 Hiatt Drive, Palm Beach Gardens, Florida



**FEATURES**

- Class "A" Office Building
- 10' High Ceilings w/ Impact Glass
- Oversized Louvered Windows which allow for Abundant Natural Light
- Eco-Friendly Transport Options like Bike Racks, Green Vehicle Parking, Carpool Parking, and Electric Car Charging Stations
- On-site Shower Facilities
- Florida Turnpike Immediate Access



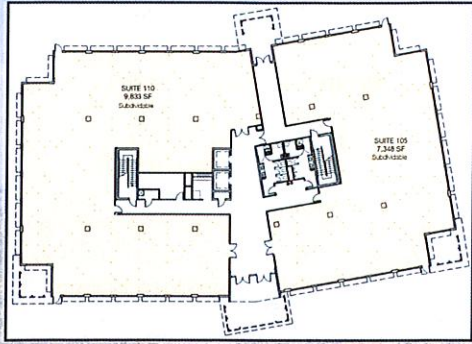
**561.478.6400**

Michael Falk / [michael@falkandco.com](mailto:michael@falkandco.com) / 561.662.2624  
Scott Weprin / [scott@falkandco.com](mailto:scott@falkandco.com) / 561.239.9386

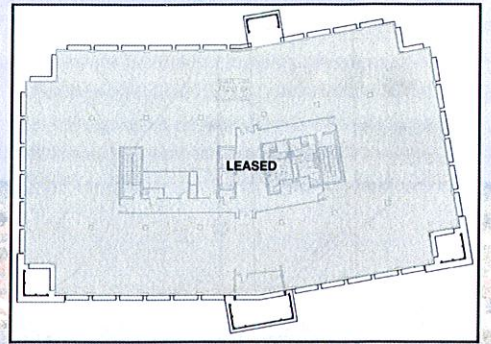
901 Northpoint Parkway, Suite 109 / West Palm Beach, FL 33407 / 561.478.6400



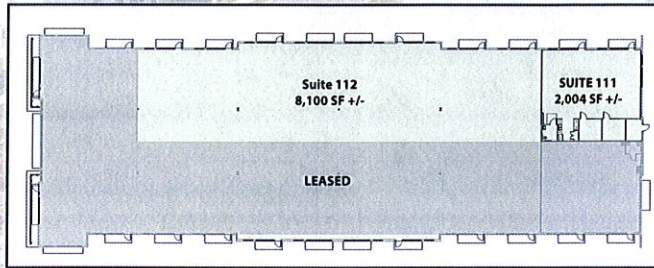




348 Hiatt Dr. (First Floor) - 18,750 SF



348 Hiatt Dr. (Second Floor) - 18,750



354 Hiatt Dr - 10,104 SF